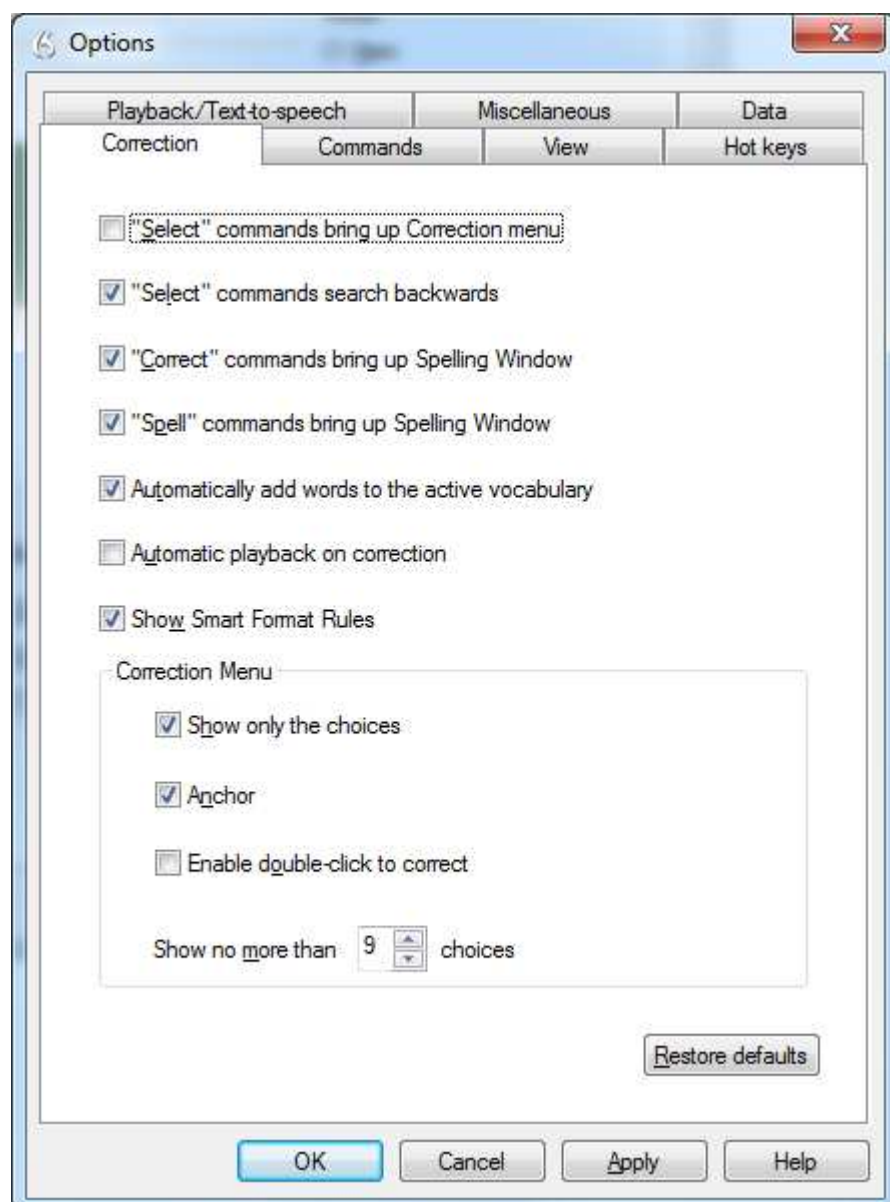


# Recommended settings for Dragon 13

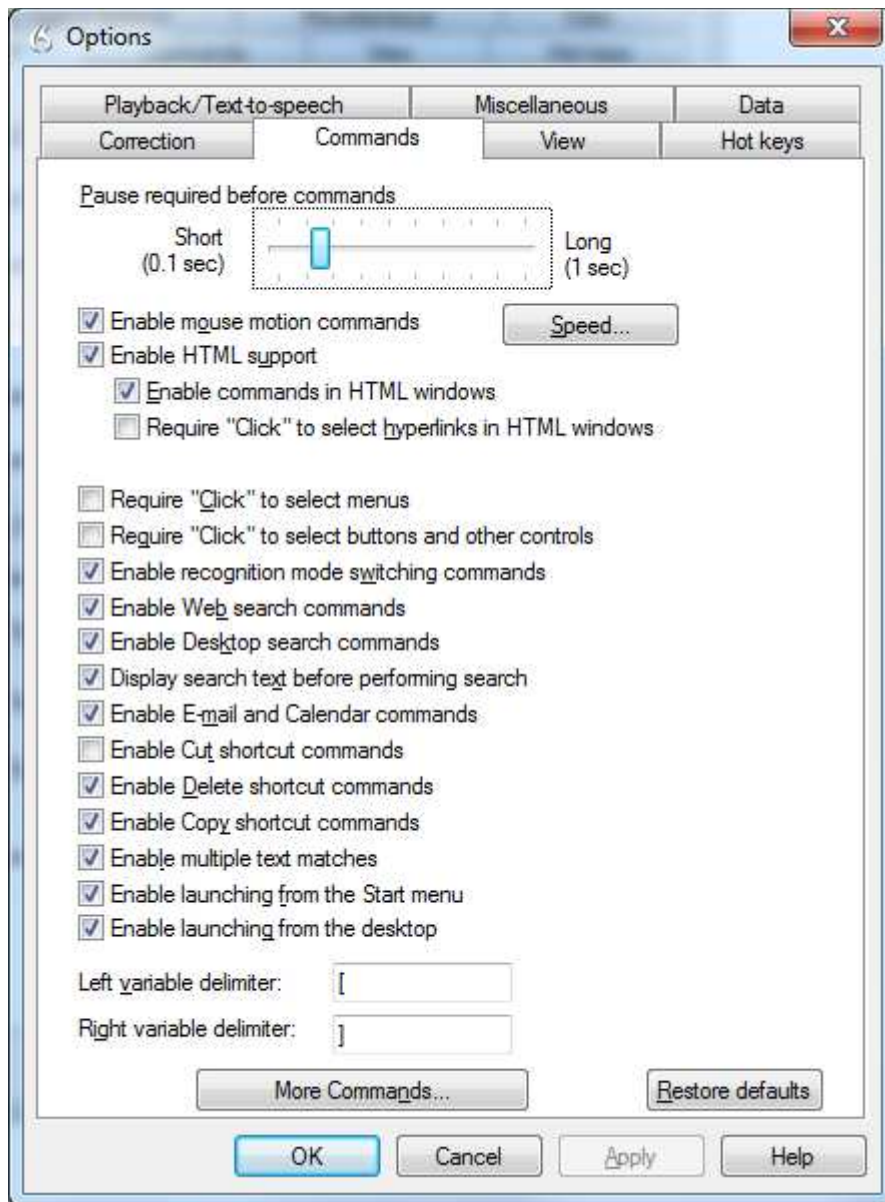
To adjust Dragon settings go to DragonBar> tools> options

Follow the recommended settings below, then click Apply> OK

## Correction tab

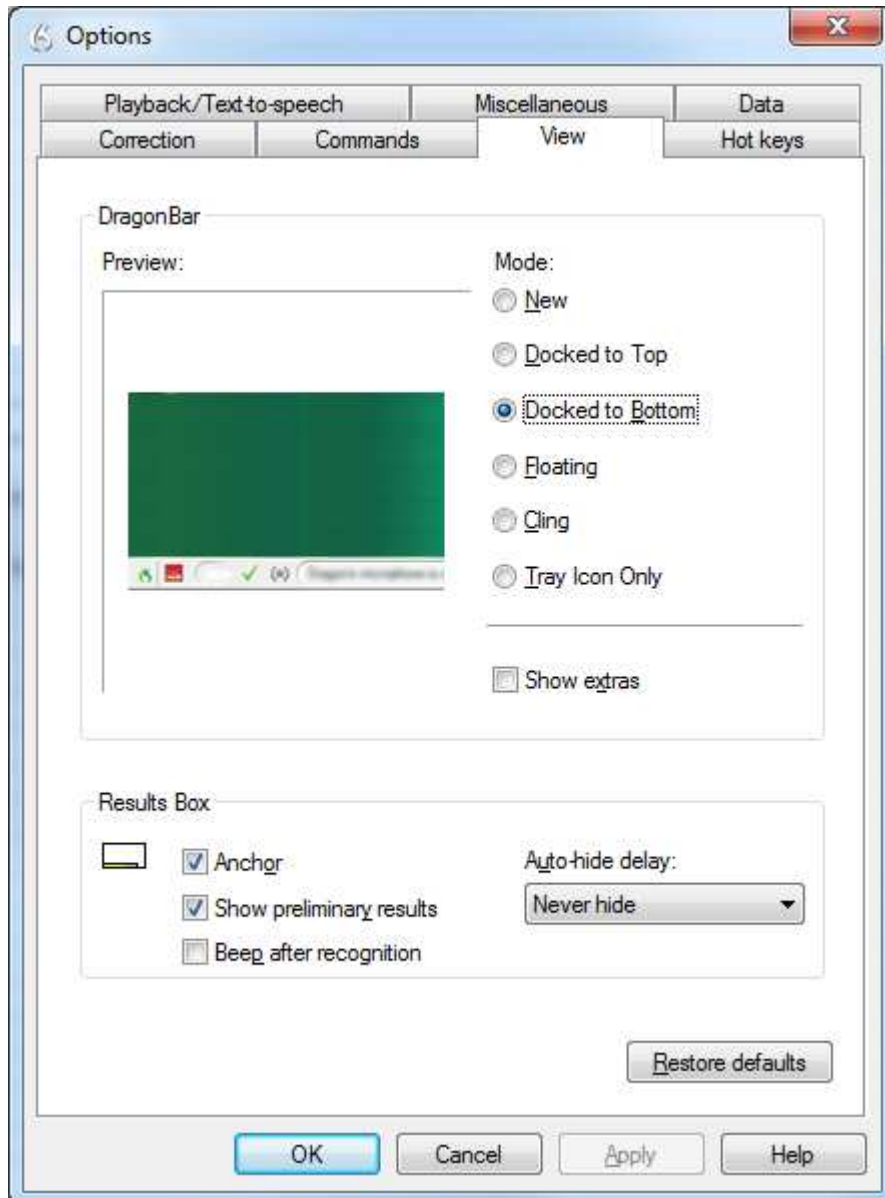


## Command tab



## View tab

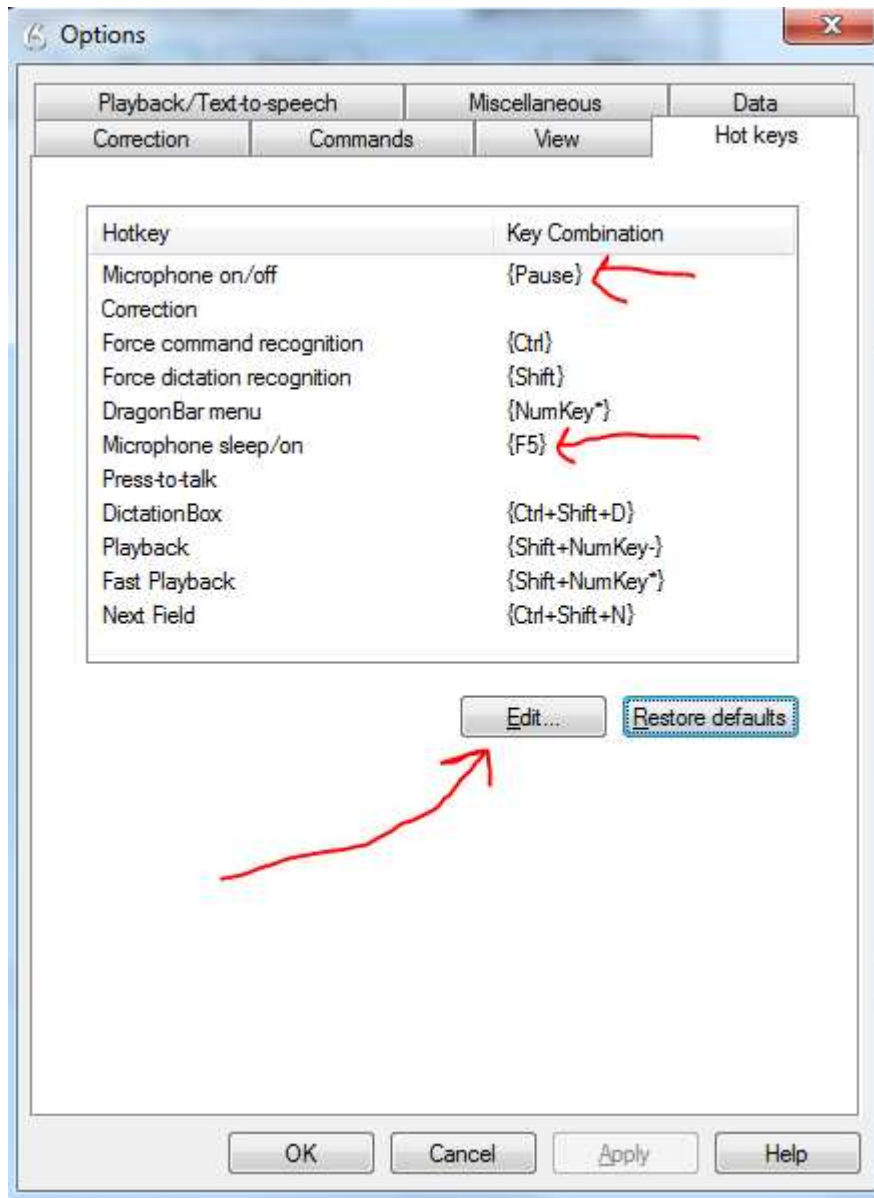
Change the Mode depending on whether you want the DragonBar docked to the top or the bottom of the screen.



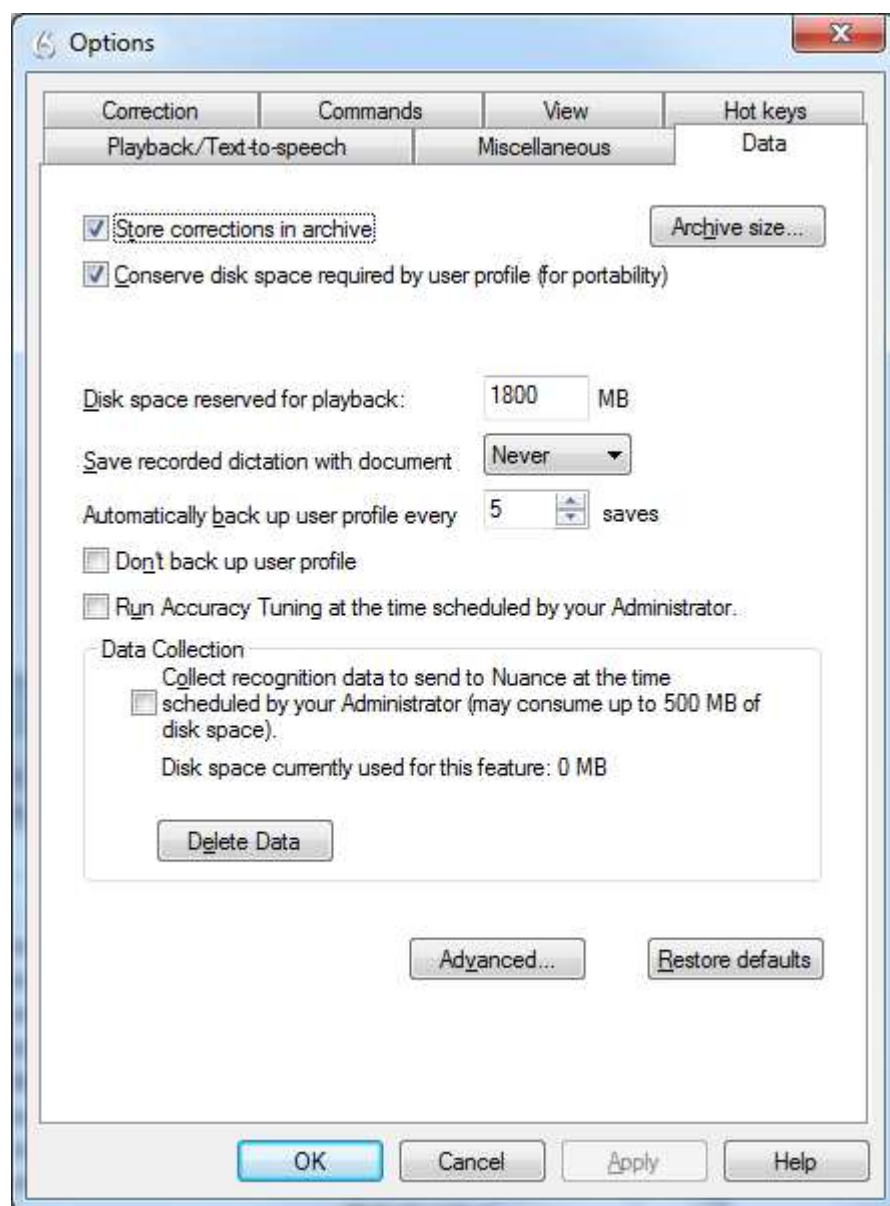
## Hot keys

Set hotkeys to toggle the microphone between on and off, and also between on and sleep.

Choose keys that you don't need for any other purpose. To change the hotkeys, click 'microphone on/off', then *Edit*, then press desired key. Do the same for 'Microphone sleep/on'.



## Data tab

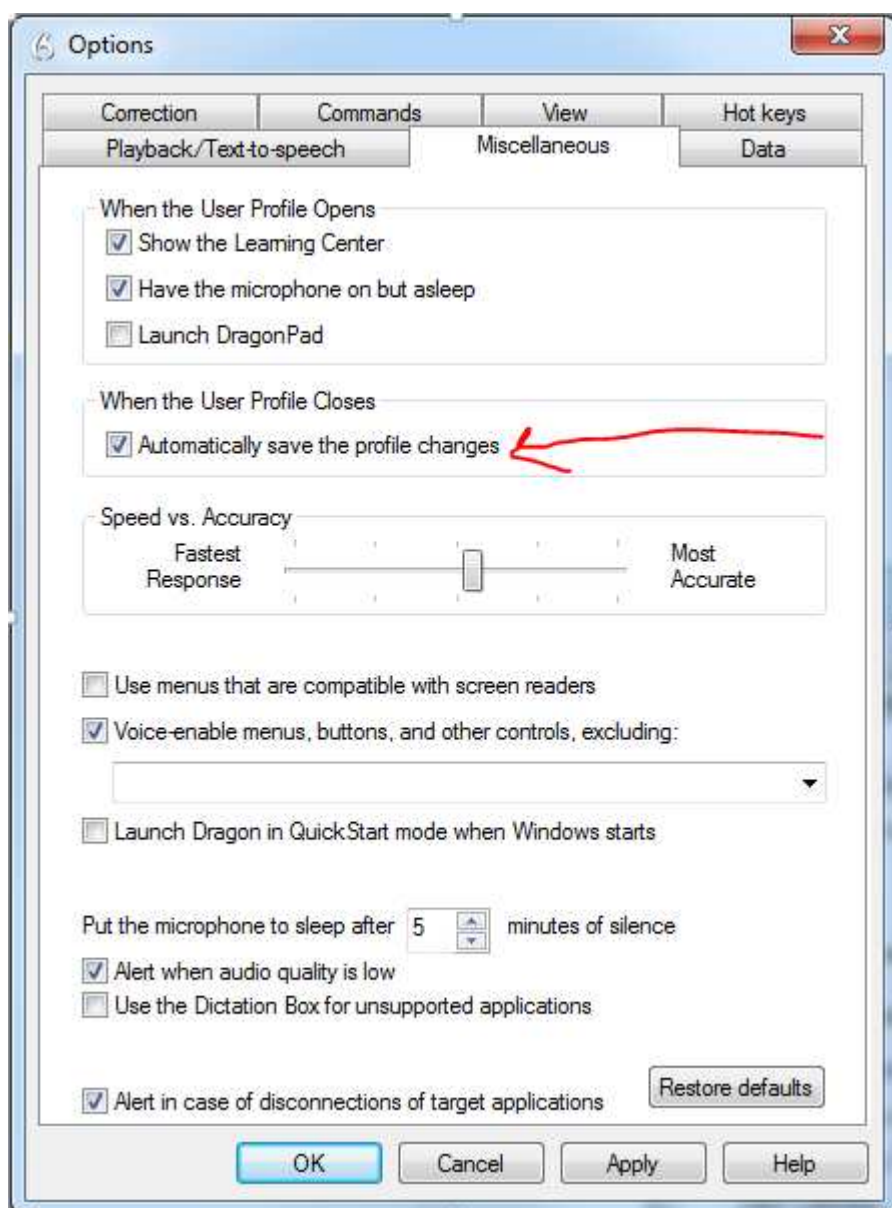


## Miscellaneous

Adjust the *Speed vs Accuracy* slider bar depending on how fast and accurately Dragon is working. There is a trade-off between speed and accuracy. If recognition accuracy is high but Dragon is working slowly, move the sidebar towards the left. If speed is good but recognition accuracy is not so good, move the slider bar towards the right.

The more powerful your computer is (with a fast processor and at least 8 GB of RAM) the more you will be able to move the slider bar towards the right, and have Dragon working at a good speed *and* with a high level of recognition accuracy.

It is important to check 'Automatically save the profile changes'.



## Playback / Text to speech

You shouldn't generally need to adjust anything on this tab.

