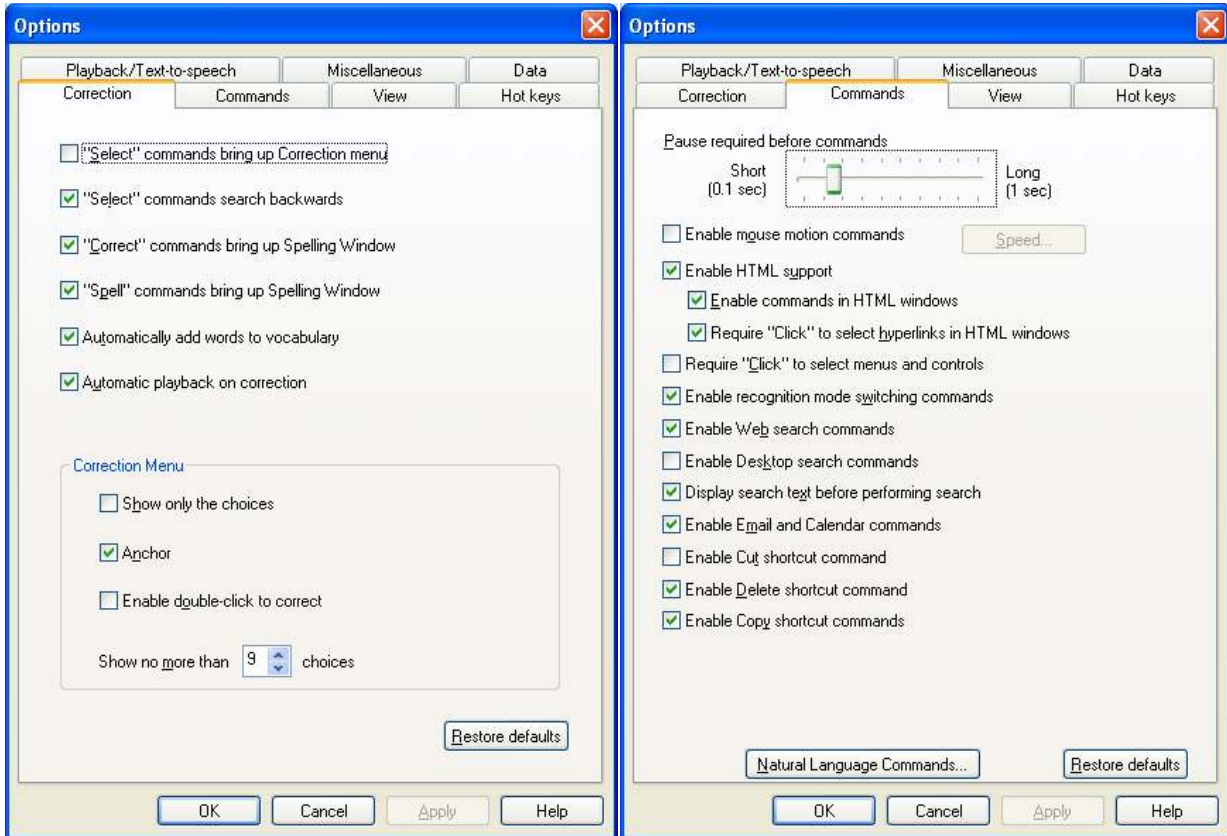


Recommended settings for Dragon 11

To adjust settings, go to Dragon bar>Tools>Options

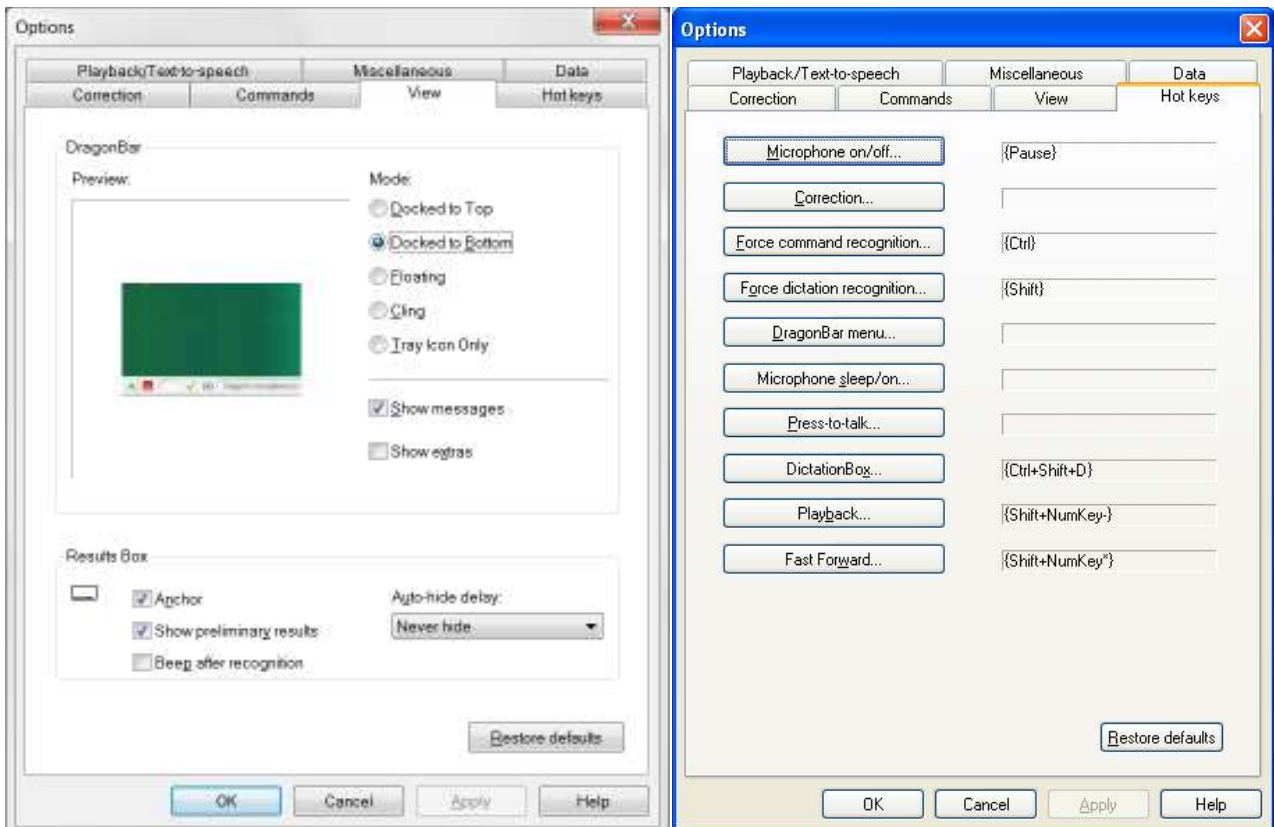
Change settings to those recommended below.



Hot keys (keyboard shortcuts):

The most commonly used hotkey is the one used to turn your microphone on and off. You can choose any key you like, but it needs to be one that is not required for any other task. The Pause key is a good one to use.

In the HotKeys tab, click on 'Microphone on/off'. Then press the key you want to assign as the keyboard shortcut to turn the microphone on and off (for example the Pause key). Click OK.

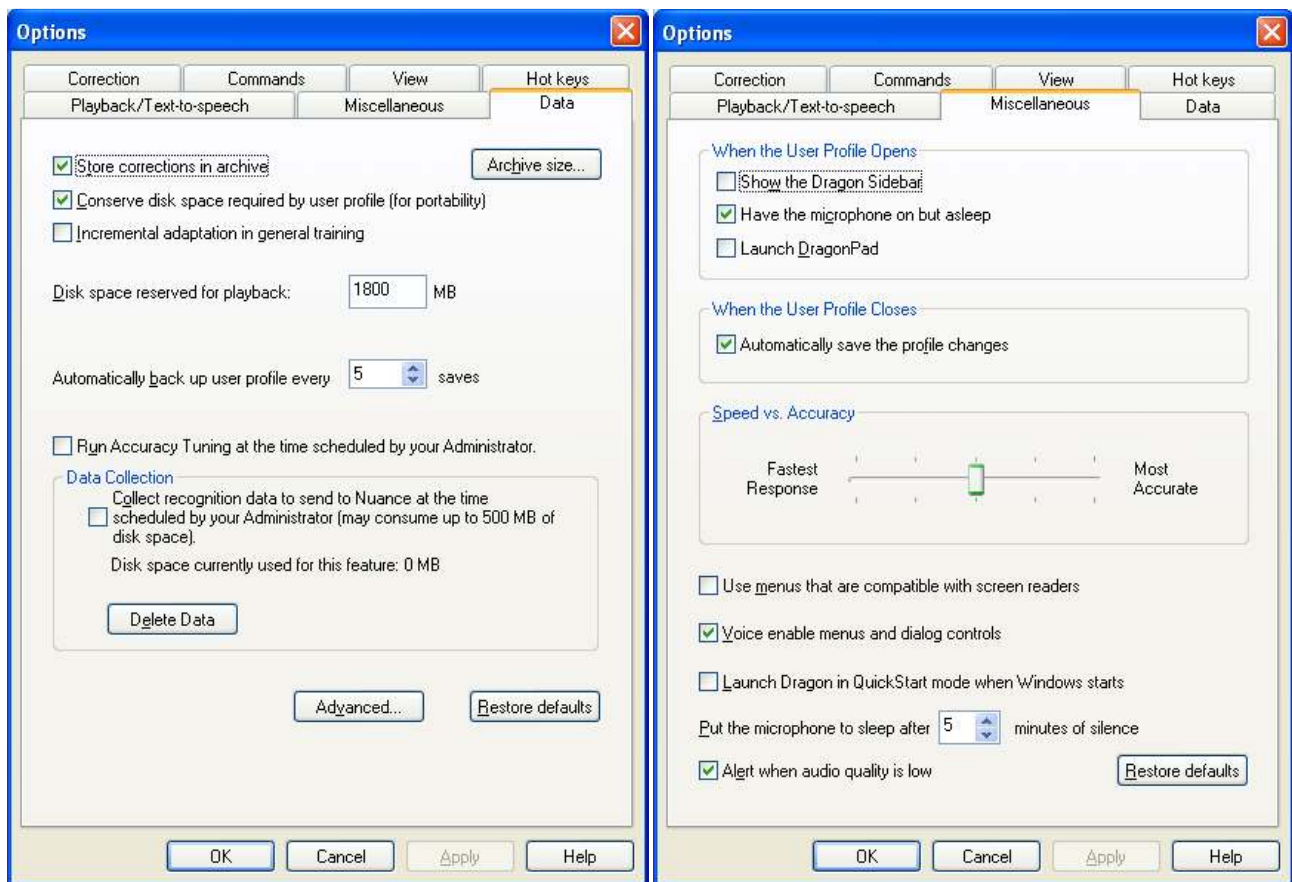


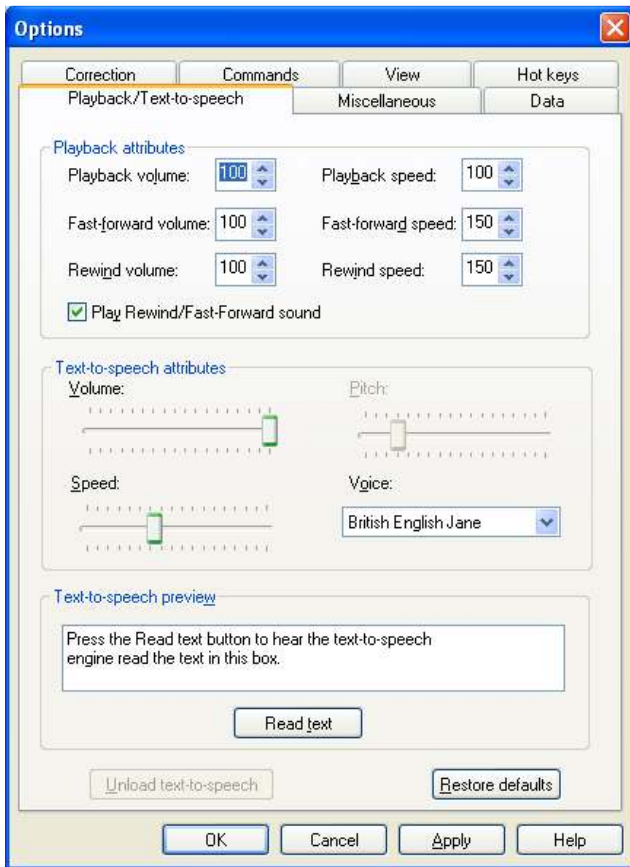
Miscellaneous tab

- Microphone on Asleep: check this option if you would like to be able to wake the microphone up by voice when Dragon first launches.
- Speed versus Accuracy: if you have plenty of RAM and Dragon is working at a good speed, move the slider bar more towards 'Most Accurate'

Data Tab

- Check 'Store corrections in archive' only if you plan to use the Acoustic Optimiser (not essential)





Click Apply then OK

Your Dragon user is now set up and ready for use.