

How to transfer custom vocabulary and commands from one Dragon user profile to another

If you need to set up a new user profile for any reason and you still have access to your old user profile, it will be useful to export your custom vocabulary and commands (macros) to the new user profile.

Upgrading to a new version of Dragon

During the installation of Dragon 13 you will be prompted to upgrade your Dragon user profile. I recommend that you say yes to this, so you have your user profile available quickly.

However I recommend that you consider setting up a new user profile in version 13. This will ensure that you get full advantage from improvements to the speech engine. You can import your custom vocabulary and commands (macros) from the old user profile to your user profile in the new version, following the instructions below.

If upgrading your Dragon user profile to the new version, you will be able to export customisations *after* this process, but in case this process fails, it is advisable to export your customisations *before* installing the new version.

While you still have access to the old version, follow the instructions in Section 1 below to export your customisations. After setting up a new user profile in V 13 you can import these customisations, following instructions in Section 2.

How to open or delete a user profile

If you have more than one user profile, you can move between them by going to DragonBar> profile> open user profile.

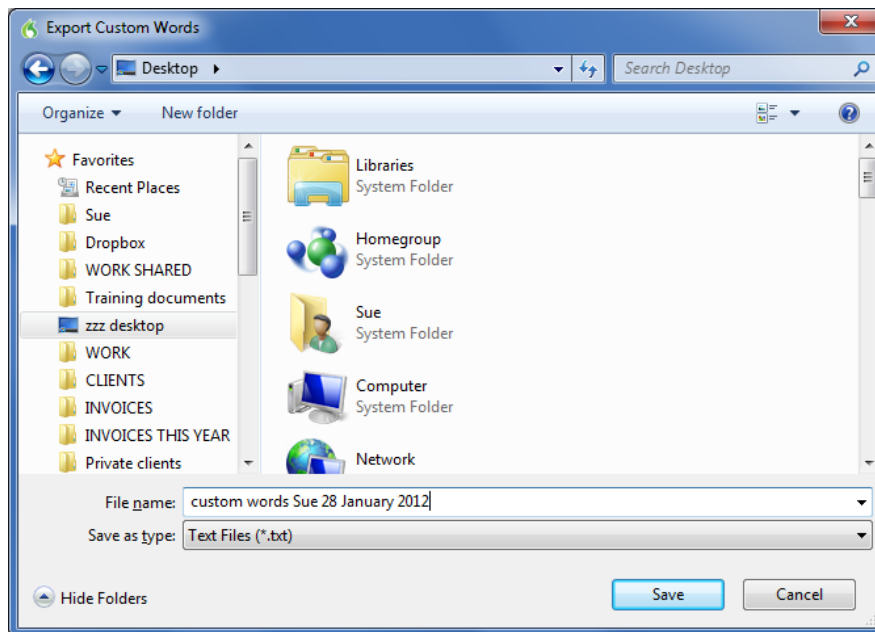
To delete an unwanted profile, go to DragonBar> profile> manage user profiles> Select the profile (note you can't delete a user profile that is open)> Delete.

1. Export customisations from old user profile

1.1. Export a copy of custom vocabulary

1.1.1. Say "Export Custom Words" or go to Dragon Bar > Vocabulary > Export custom word and phrase list

1.1.2. In the *Export Custom Words* dialogue, give the file a name (eg 'Custom words name date') and browse to the location where you wish to save the file (the desktop will do) . Note the location for future reference. Say or click "Save"

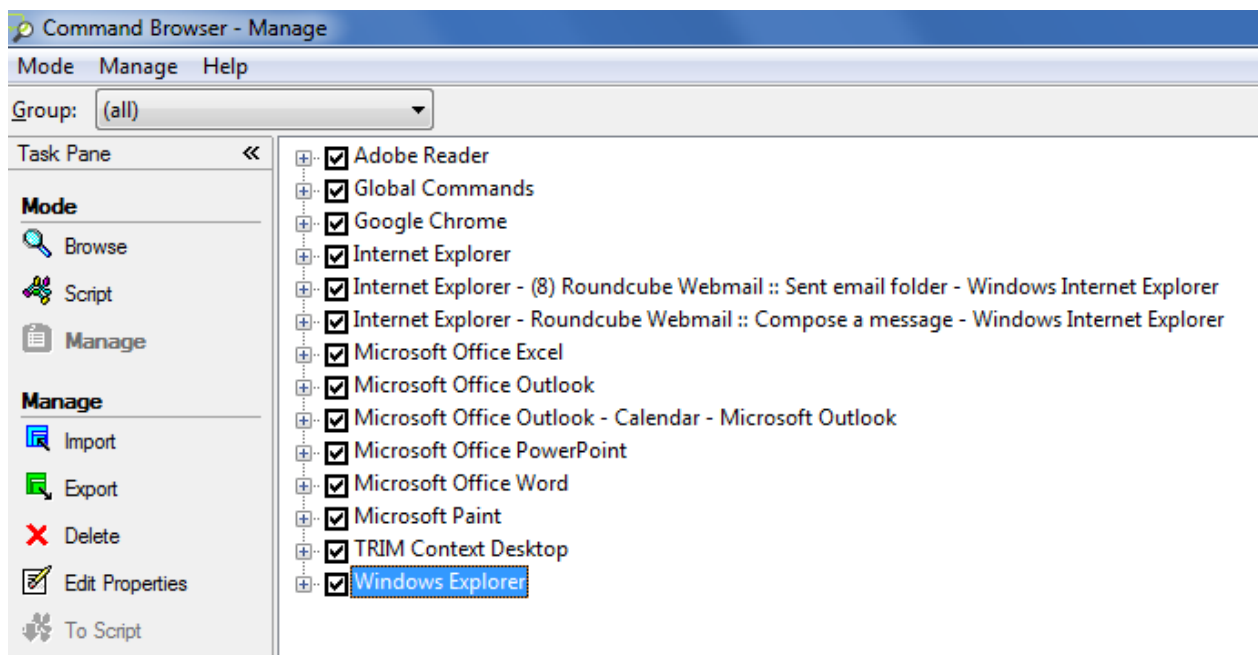


1.1.3. Check that your custom vocabulary has been exported by opening the document. It should contain all the words and phrases you have added to Dragon's vocabulary.

1.1.4. Tip: Print a copy of this file to remind you of the custom words and phrases you have in the vocabulary.

1.2. Export a copy of custom commands (macros)

- 1.2.1. Say "Open the Command Browser" or go to Dragon Bar/Tools Menu/Command Browser
- 1.2.2. Click or say "Manage"
- 1.2.3. From the 'Group' drop down list, choose 'all'.
- 1.2.4. Check the square to the left of each application in the list, including Global, as below. After you have checked the first square by hand, you can check other squares by voice by saying "Move Down 1" (to navigate the list) then "Space" or "Spacebar" (to tick the box).



- 1.2.5. Click or say "Export". This displays the *Export commands* dialog
- 1.2.6. Browse to the location where you wish to save the file (the desktop will do). Note the location for future reference.
- 1.2.7. Name the file, eg 'Macros your name Date'.
- 1.2.8. Say or click "Save"
- 1.2.9. In Windows Explorer, browse to the folder to make sure the macro file is there. The file extension will be '.dat'. Note that you won't be able to open this file, but you can check that it is there.

You can then copy the two files onto a thumb drive, or you could e-mail them to yourself, as attachments.

2. Import customisations into new user profile

2.1. First set up a new user profile in V13

2.1.1. Go to DragonBar> profile> New user profile and follow the prompts

2.2. Import custom vocabulary

2.2.1. Say "Import words" or go to DragonBar > Vocabulary > Import list of words or phrases

2.2.2. Say or click "Next", then "Add File"



2.2.3. Browse to the Exported list of words and phrases and select it

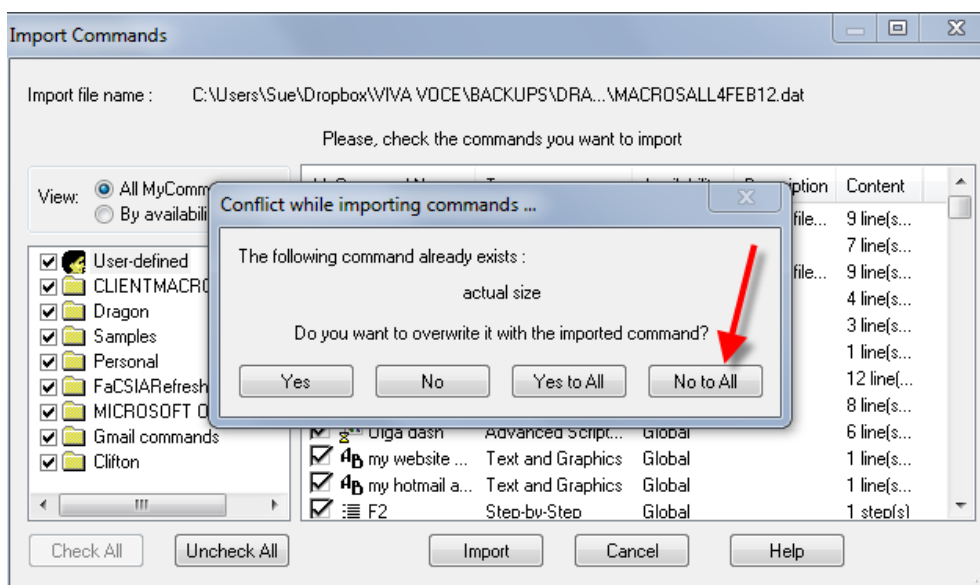
2.2.4. Click "Open", then "Next", and "Next" again

2.2.5. Follow the prompts from here.

2.2.6. You will be given an opportunity to train your pronunciation of words and phrases. If importing a large list, I recommend that you don't train, as it will take too long. You can always train your pronunciation of words and phrases that Dragon has difficulty recognising later, by going to the vocabulary editor (say "Edit vocabulary").

2.3. Import custom commands (macros)

- 2.3.1. Say "Open the Command Browser" or go to DragonBar> Tools> Command Browser
- 2.3.2. Click or say "Manage"
- 2.3.3. Click or say "Import"
- 2.3.4. Browse to the exported macro file (file extension will be .dat) and select it
- 2.3.5. Say or click "Open"
- 2.3.6. Say or click "Import"
- 2.3.7. to avoid overwriting any existing macros, say or click "No to all"



- 2.3.8. Say "Close window" to close the Command Browser.