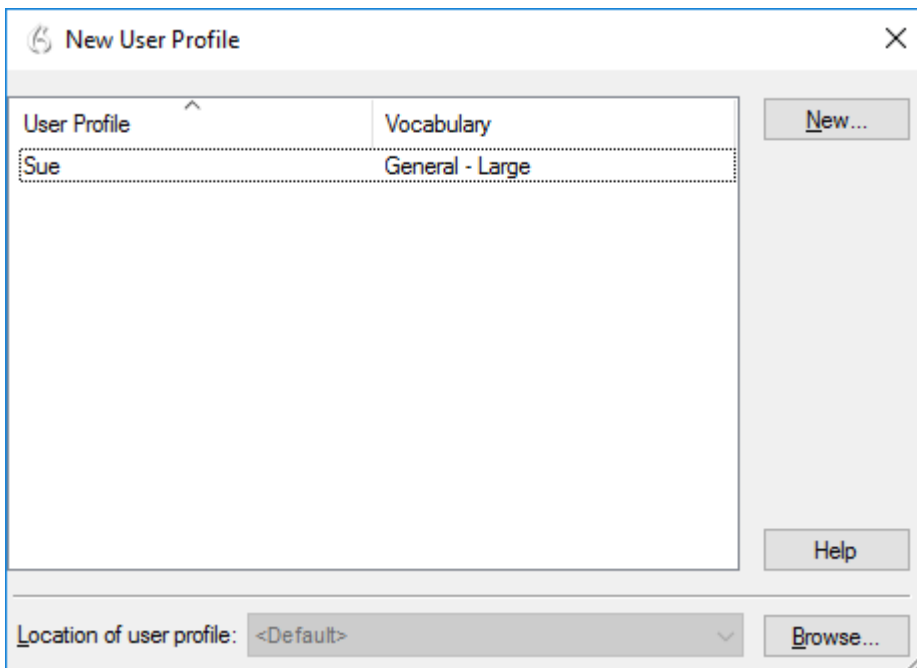


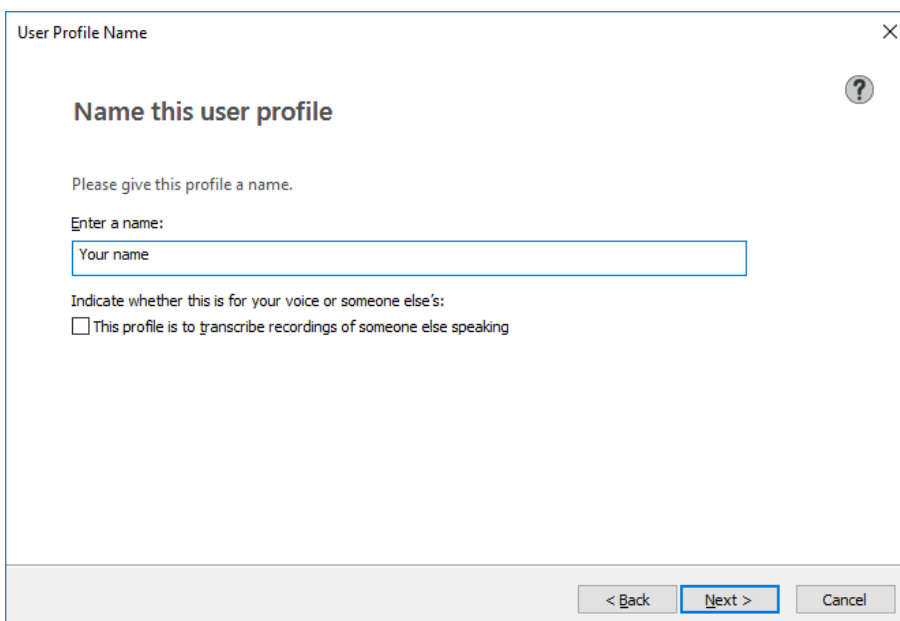
# How to set up a new user profile in V15

Go to Dragon bar/profile/new user profile

Click New

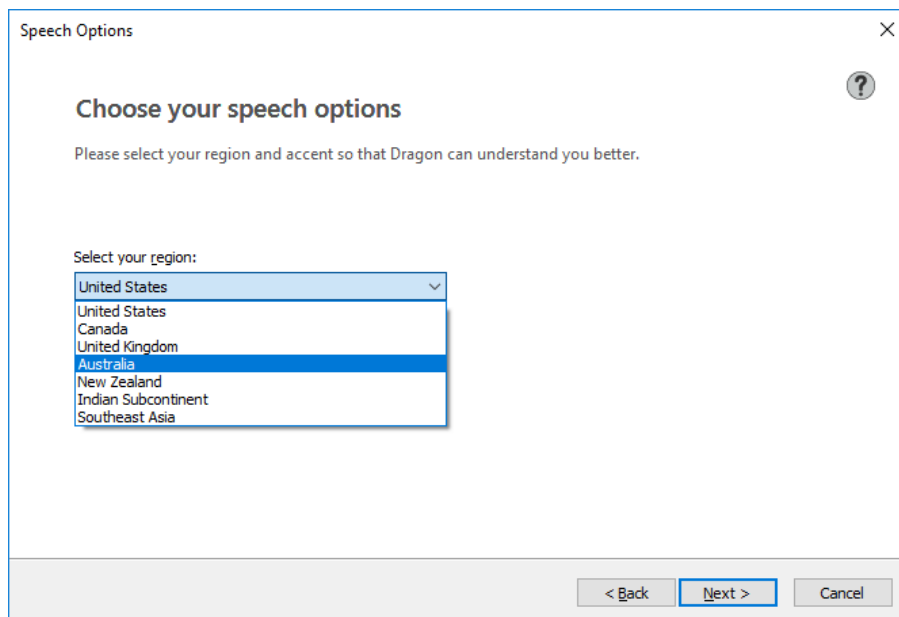


Name your profile/next



Choose the appropriate accent model under *Select your region/Next*

If there is only what one accent option here and it doesn't suit, see note at the bottom of this document.



### Select the appropriate microphone

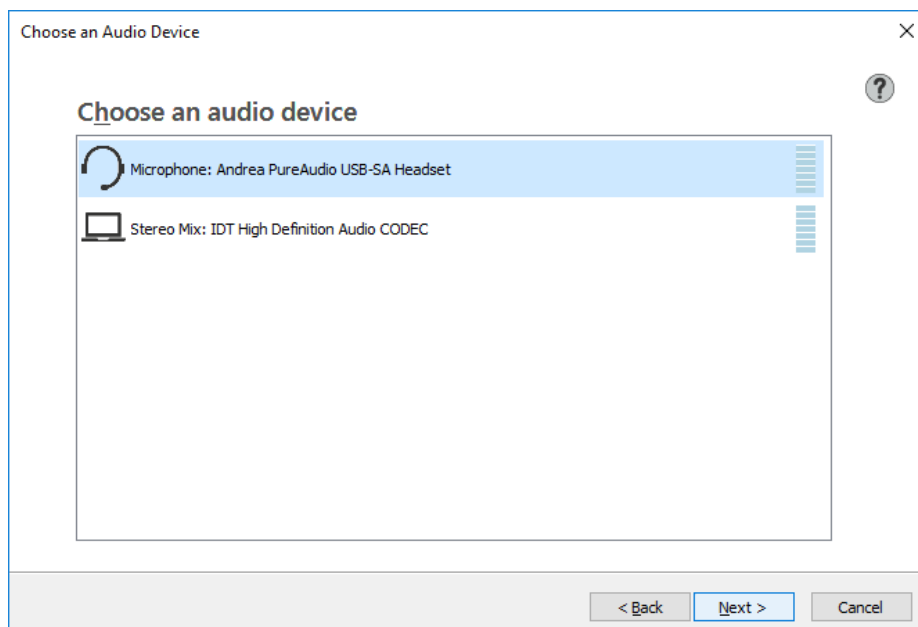
Click on the appropriate microphone/next

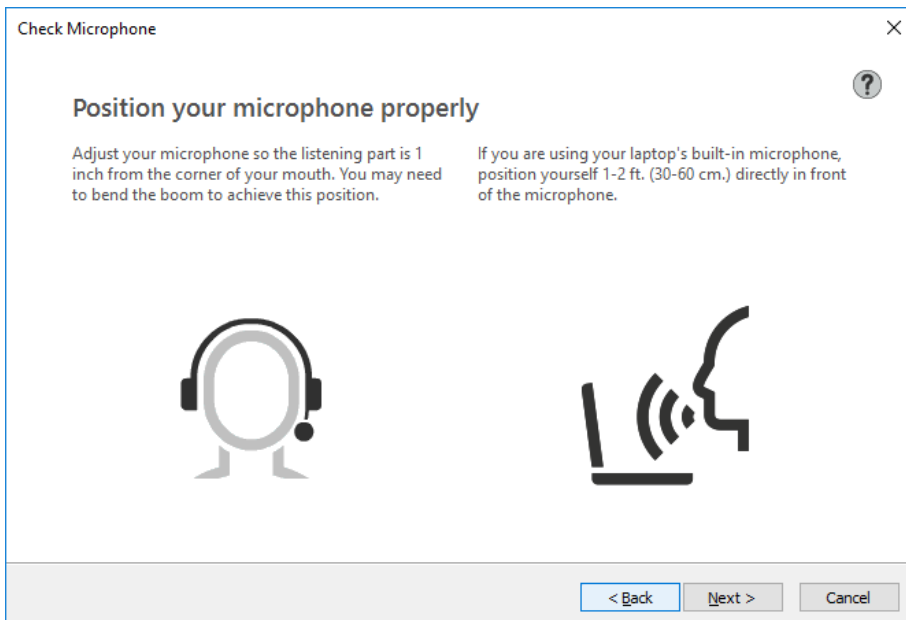
If your microphone doesn't appear under Choose an audio device, check that it is properly plugged in.

If your computer has a built-in microphone, it's best to disable it (unless you are using it with Dragon, which I wouldn't recommend and as you will get best results from using a headset microphone).

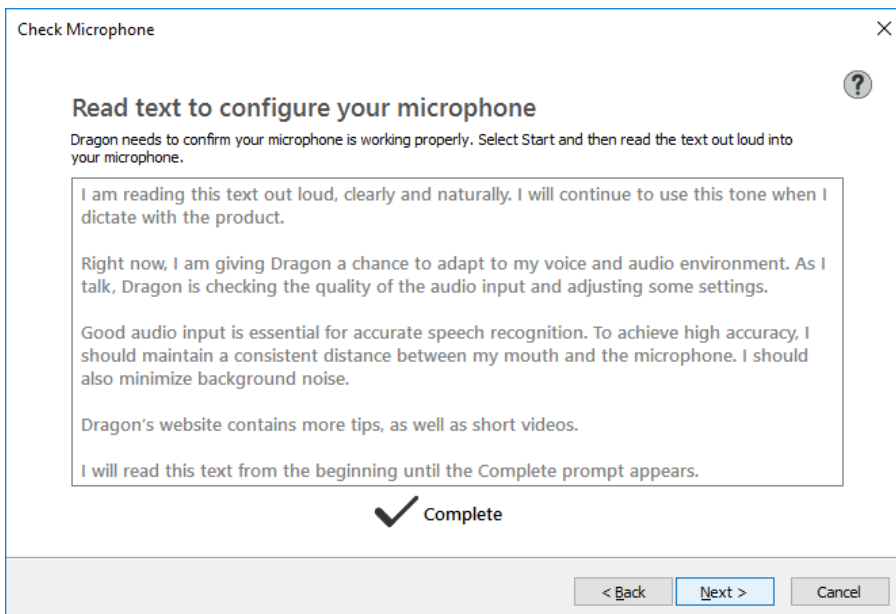
For microphone FAQs and troubleshooting tips including how to disable built-in microphones, see

<http://www.vivavocesrs.com/microphone-fags.html>





Click start, and read the text in the box/next



If you are happy to allow some of your corrections data to be sent to Nuance automatically, click *Enable this now*. Otherwise click *Don't enable this now*. For anyone concerned about security, best to click *Don't enable this now*.

Accuracy ✕

?

### Help us improve Dragon

You can participate by simply allowing data from your use of Dragon to be analyzed:

- audio and transcripts, so we can increase accuracy, and
- metrics by Google Analytics, so we can improve and prioritize features

The data would be available to our company, Nuance Communications, Inc., located in the United States.  
You can stop participating at any time.

Enable this now (recommended)

Ask me later

Don't enable this now

[Privacy statement](#)

< Back Next > Cancel

Click finish

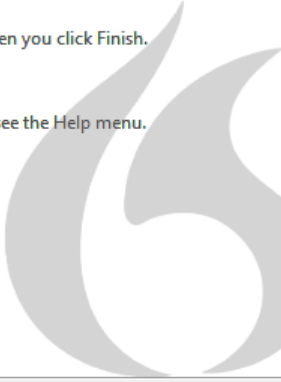
Finish ✕

?

### Dragon is ready for you!

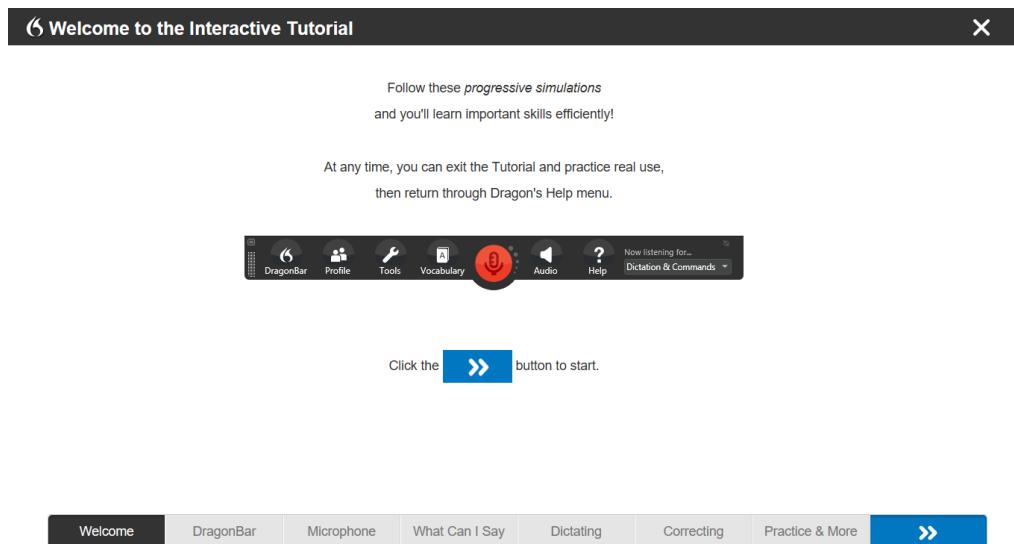
We recommend you explore Dragon's Interactive Tutorial, which will appear when you click Finish.

For important details on new features and additional training resources, please see the Help menu.



< Back Finish

You can go through the tutorial, or close it



If Dragon doesn't open automatically, go to Dragon bar/profile/open user profile.

## Adjust Dragon's settings

Adjust Dragon settings, following those recommended at:

[http://www.vivavocesrs.com/uploads/2/0/1/6/20169421/recommended\\_settings\\_for\\_dragon\\_15.pdf](http://www.vivavocesrs.com/uploads/2/0/1/6/20169421/recommended_settings_for_dragon_15.pdf)

Note that it is important to adjust settings, so don't forget to do this.

## Import custom vocabulary and commands from previous version if applicable

Follow the instructions at <http://www.vivavocesrs.com/how-to-preserve-your-dragon-customisations.html> (sections 2.2 and 3.2) to import the custom vocabulary and commands that you exported from your old Dragon profile.

## Note re Foreign accents

If you speak English with a foreign accent, it is important to check 'all English regions' under *Region Selection* during installation.

If this wasn't done, you will need to uninstall Dragon and reinstall it, to ensure that all accent models are installed.

If you choose 'Australia/New Zealand' under Region Selection you will only have access to the Australian accent model when you set up your user profile.

